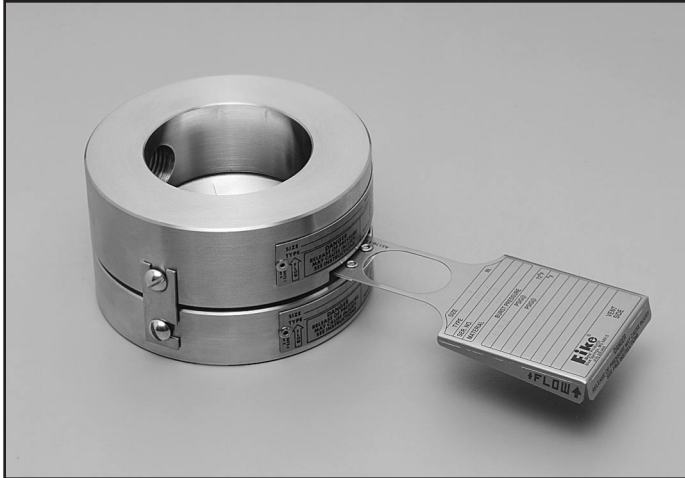
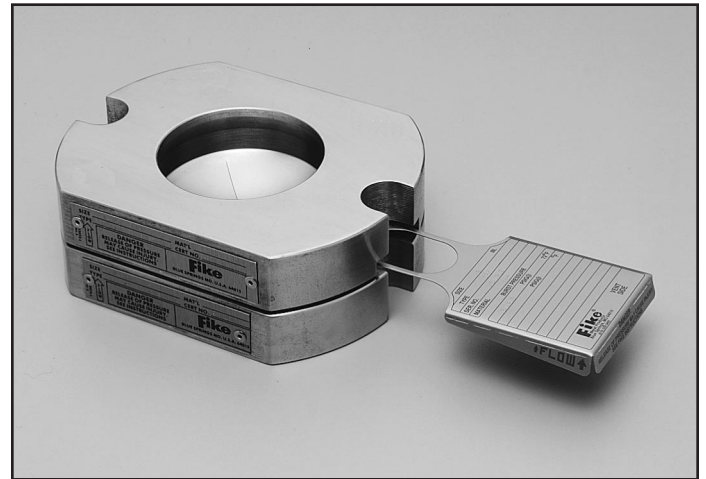


INSERT & PRETORQUEABLE HOLDERS FOR SRX AND SRL DISCS



"GI" insert rupture disc holder



"TQ" pretorqueable rupture disc holder

UNIQUE FEATURES OF SR-SERIES RUPTURE DISC HOLDERS

SR-Series Rupture Disc Holders have been designed to provide the following features:

- DiscLoc™ locator helps prevent inverted disc installation
- Serrated gasket faces per ANSI B16.5 for improved gasket sealing
- Optional Tantalum metalating for enhanced corrosion protection
- Optional O-Ring disc seal for reduced emissions.
- Optional 1/2" Gauge tap for installation of pressure gauges.*

"GI" INSERT SR-SERIES HOLDER

The "GI" insert rupture disc holder consists of a base (inlet) and a holddown flange (outlet). 300 series stainless steel sideclips are provided to facilitate pre-assembly of the rupture disc prior to installation.

"TQ" PRETORQUEABLE SR-SERIES HOLDER

The pretorqueable rupture disc holder consists of a base (inlet) and holddown flange (outlet) with pretorqueable capscrews to provide proper clamping of

the rupture disc. The correct load is applied to the assembly using the standard socket head capscrews provided with the holder assembly.

The purpose of this holder design is to allow the rupture disc to be installed and torqued to the proper static load values at a workbench under ideal conditions. It may then be delivered to the field location to be installed between companion flanges. The pretorqueable feature eases field assembly work during installation between companion flanges and reduces the possibility of errors causing leakage. Pretorqueable assemblies may also be removed, inspected, and replaced during routing maintenance schedules and plant turn-arounds without compromising disc performance.

For holder configurations other than insert or pretorqueable style (for example, full-bolting, welded, or threaded versions) please consult factory.

* 1/2" Gauge Tap not available in 1-1/2" and 2" 150 ANSI TQ or 1-1/2" 300 ANSI TQ sizes.

“GI” INSERT HOLDERS FOR SR-SERIES DISCS

Size	SRX Assembly Height (In.)	SRL Assembly Height (In.)	SRLO Assembly Height (In.)	Dimensions (In.)			
				ANSI 150		ANSI 300	
				Outside Diameter		Outside Diameter	
1"	2-1/8	2-3/8	2-1/16	2-1/2	2-3/4		
1-1/2"	2-1/8	2-3/8	2-1/16	3-1/4	3-5/8		
2"	2-7/32	3	2-5/32	4	4-1/4		
3"	2-7/32	3-3/4	2-5/32	5-1/4	5-3/4		
4"	2-9/16	4-9/16	2-1/2	6-3/4	7		
6"	2-15/16	6	2-7/8	8-5/8	9-3/4		
8"	3-7/32	7-9/16	3-5/32	10-7/8	12		
10"	3-15/16	NA	NA	13-1/4	14-1/8		
12"	4-9/16	NA	NA	16	16-1/2		

Consult factory for alternative holder heights.
Optional SRLO holders are not recommended for isolation of safety relief valves.

MATERIALS OF CONSTRUCTION

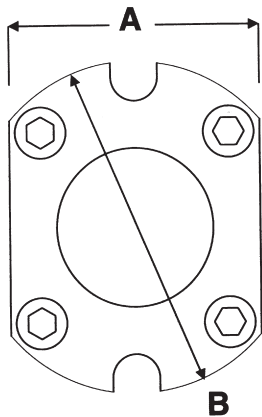
Holders are available in carbon steel, 316 stainless steel, and tantalum metalated 304 stainless steel. Examples of other materials available on request are Hastelloy, Inconel, Monel, and nickel.

DiscLoc is a trademark of Fike Corporation. Inconel and Monel are registered trademarks of the Inco family of companies. Hastelloy is a registered trademark of Haynes International.

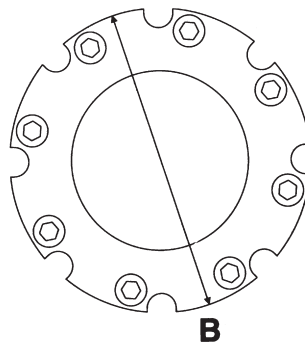
“TQ PRETORQUEABLE HOLDERS FOR SR-SERIES DISCS

Size	Configuration		SRX Assembly Height (In.)	SRL Assembly Height (In.)	SRLO Assembly Height (In.)	Dimensions (In.)				Capscrew Size (In.)
	ANSI 150	ANSI 300				ANSI 150		ANSI 300		
						A	B	A	B	
1-1/2"	1	1	2-1/4	2-11/16	2-3/16	3-1/4	4-1/4	3-5/8	4-1/4	3/8
2"	1	2	2-11/16	3-1/2	2-5/8	4	5-1/4	NA	5-1/4	1/2
3"	1	2	2-5/8	4-5/32	2-9/16	5-1/4	6-3/8	NA	6-3/4	1/2
4"	2	2	2-7/8	4-13/16	2-3/4	NA	7-3/4	NA	7-3/4	1/2
6"	2	3	2-15/16	6-1/16	2-13/16	NA	9-1/2	NA	9-3/4	1/2
8"	2	3	3-1/4	7-5/8	3-1/16	NA	11-3/4	NA	12	1/2
10"	2	3	3-15/16	NA	NA	NA	13-13/16	NA	14-1/8	1/2
12"	3	3	4-9/16	NA	NA	NA	16	NA	16-1/2	1/2

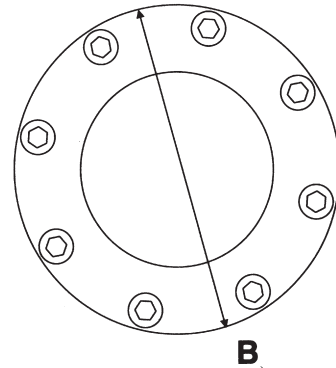
Optional SRLO holders are not recommended for isolation of safety relief valves.



Configuration 1



Configuration 2



Configuration 3